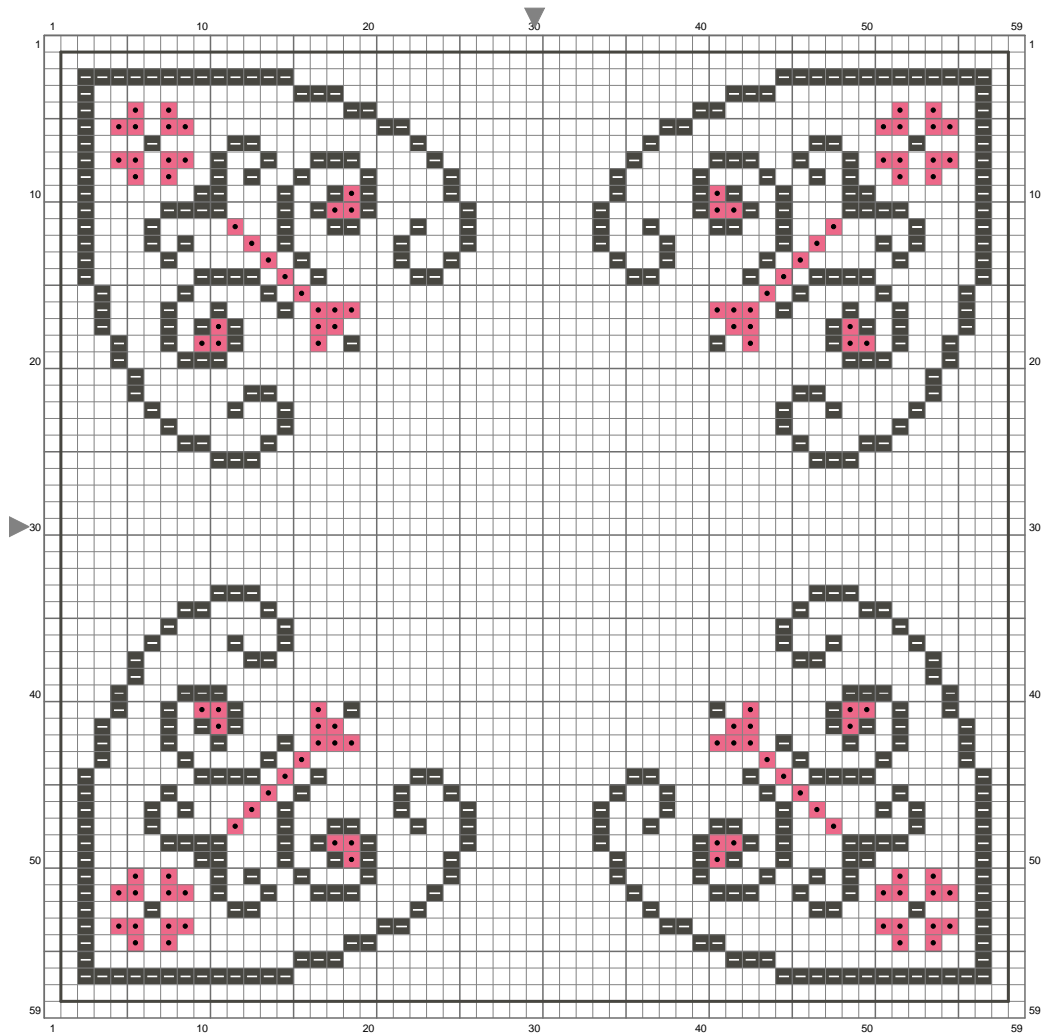


Nadelkissen 2



(This chart is printed using KG-Chart LE for Cross Stitch.)

Stitch Count: 59w x 59h // Cloth: ð // Cloth's Color: White

Finished Size: 10.72 cm x 10.72 cm (11 linen thread/cm) // Total 2 Colors

Color Table (DMC)

Cross Stitch

- 3021 (468 ct)
- 335 (116 ct)

Back Stitch

- 3021 (4 ct)

Comment

Nadelkissen
Sylvia
<http://syku66.blogspot.com>